

# Mouse Pointer Options in Windows XP

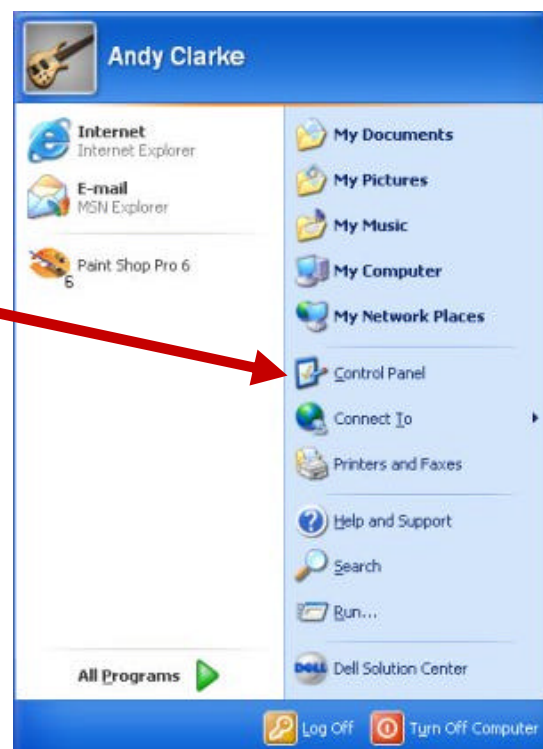
This skill-sheet has been designed to give you a tour of the standard mouse pointer options within Windows XP.

To start you will need to open the Windows Control Panel.

**Select: Start – Control Panel**

*Note: In older versions of Windows, the Control Panel is found in the settings menu.*

Once you are in the Control Panel, look for the mouse control options. It should look similar to this icon. Select it by either double clicking or moving the highlight with the cursor keys and pressing enter.

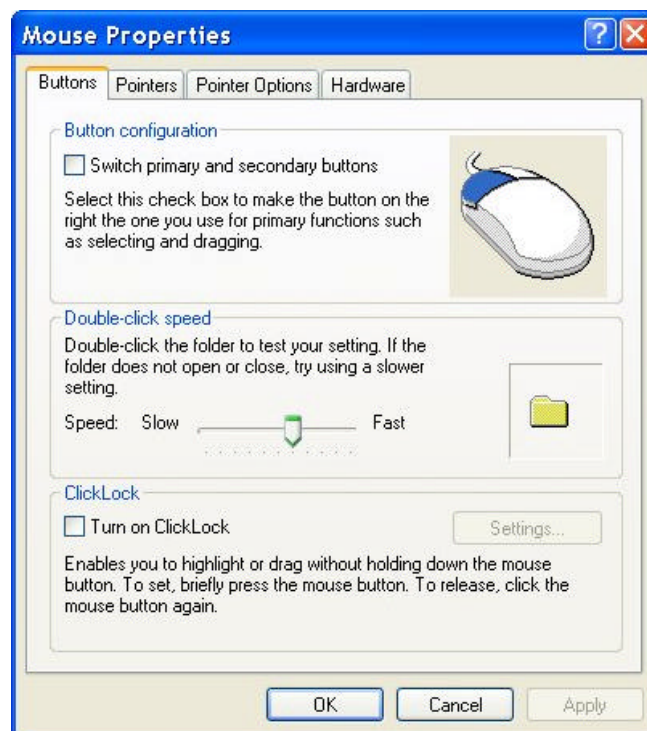


There are 4 separate sections to mouse properties. They are under the tabs at the top of the window marked; Buttons, Pointers, Pointer Options, and Hardware. The default option is Buttons and should be displayed once you enter mouse properties.

The first option is aimed at users who are left handed. By checking the box marked 'Switch primary and secondary buttons', the standard mouse button settings are reversed. This makes the right hand mouse button the default for making selections. If you are left handed it is better to use your left index finger to select with the mouse as it is more in tune with your body's natural design.

The 'Double-click speed' option enables you to tune the speed at which the computer will recognise a double click. For a lot of people, the mouse operates too quickly as standard. By reducing the double click speed, they can get much better control.

You can use the 'ClickLock' feature to tune the computer to automatically emulate a 'Drag-Lock' facility. Instead of having to hold the mouse button down for the entire duration of highlighting, or dragging, you click and hold the mouse button down for a set period of time and the computer automatically locks the button-press down for you, until you click the button again to switch it off. This feature can aid people with slight tremors or painful finger conditions.

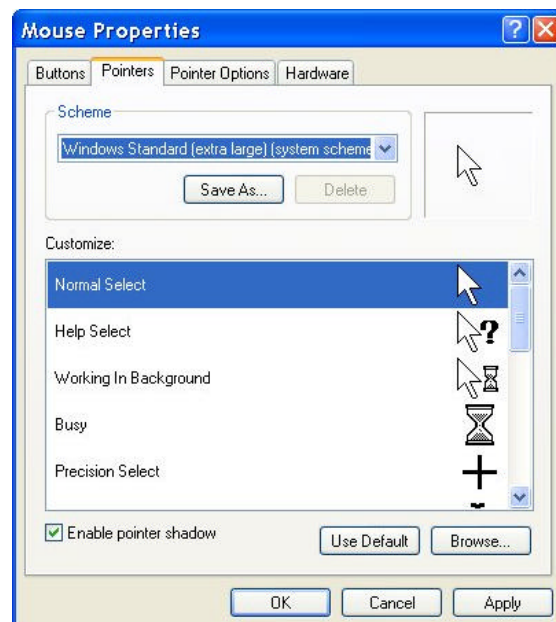


# Mouse Pointer Options in Windows XP

## Pointers section:

The standard mouse pointer can be small and difficult to see. For this reason, there are a number of different options for you to choose as standard under Windows. By selecting the 'Scheme' drop down you will be presented with a list of pre-installed pointers, including extra-large options.

If you wish you can also choose to change each element of the scheme individually. This is done within the customise section. Select the item you wish to change and then click the browse button to view all the pointers installed on your system. You can choose to have any of these elements either with or without a shadow, giving the pointer a 3d effect.



## Pointer Options:

The Motion bar provides you with the ability to change the pointer speed. Slowing the pointer down can make a whole range of pointing devices a lot easier to use.

When the 'Snap-To' function is active, the mouse pointer travels directly to the default selection button when entering into a menu, or provided when asked a question by the computer.

Within the 'Visibility' section you have 3 tools which can help make the pointer more visible on screen.

Pointer trails provides duplicates of the mouse pointer as you move it. It helps the user to see where the pointer has come from and where it is going.

When the 'Hide pointer while typing' option is active, the mouse pointer disappears when the keyboard is in use. This can often help people who find that the mouse pointer gets in the way whilst typing.

The last option is commonly called 'Radar Mouse'. When you hit the control key, a sequence of size-decreasing circles appears on the screen which highlight the pointer's position.

## Hardware:

Within the hardware window you can check the pointing devices installed on your computer and troubleshoot any problems you may be having. This is where you can identify, update or replace mouse drivers, or tune the hardware within the device to an advanced level.

